



RISE

The Imprint of Humanity

www.rise.org.sz

Imprinting the Goodness of Humanity



Welcome To...



RISE

The Imprint of Humanity

Vision

For every social investment to make meaningful life changing impact.

Mission

To focus on creating social investment platforms and solutions that bring about social change for investors and interested parties.

Values

We have only one Value and that is **EXCELLENCE** in all we do.

About RISE

RISE links corporations seeking to make meaningful, high impact social investments with beneficiaries needing much sought-after relief, for various initiatives in the communities they live and work in. The organization's founding ethos is on humanity translated in its' slogan The Imprint of Humanity.

The organization provides an end-to-end spectrum of corporate social investment (CSI) services on behalf of donors and beneficiaries, serving as a CSI hub of matching donors to projects. Services include, CSI Strategy Development, Consultancy, Job Placement, Proposal Writing, Securing Funding and Donor Reporting. RISE intends to be the social compass on influencing the national policy landscape on humanitarian factors, especially for Persons with Disabilities (PwD). Companies can outsource their CSI to RISE, helping them to balance their profit-making objectives against their social investment obligations.

RISE has a multi-sectorial approach, making it wholly inclusive for beneficiaries and seeks partnerships with local and international corporations that can provide funding and even extending technical assistance.

Anchored in the Kingdom of Eswatini, Mbabane, and operating as a Not For Profit Organization, RISE is affiliated to the Co-ordinating Assembly of NGOs in Eswatini (CANGO).

The name RISE was carefully selected by the Founder as she wanted a name that would be symbolic in articulating growing higher, as well as, being unforgettable. It also had to be short, simple and universally understood.

OUR BRAND SYMBOLISM

Our brand essence is informed by our quest to make a difference in the world. Our drive, to leave an imprint of goodness on humanity with each passing moment and interaction.

OUR PEOPLE

Our founder and people at RISE believe that rising to the challenge of positively impacting lives is true purpose of one's life. They believe that acts of goodness imprinted on others creates a ripple effect in peoples' hearts, recreating our character as humanity, shaping us anew.

OUR BRAND ID

Our brand identity visuals of human icons and the fingerprint embrace this very narrative which has been our sole drive to simply do good in the world.

Board of Directors



Celiwe Dlamini

With vast experience in corporate management and a passion for social change, Celiwe Dlamini drives all major projects undertaken by RISE with an essence that instils the brand ethos of "The Imprint of Humanity"



Susan Dlamini

Susan Dlamini is an experienced businesswomen and former Mbabane City councillor. Her wealth of expertise and visionary approach aide RISE to speak to the needs of the elderly and disabled.



Lwandle Dlamini

Lwandle is the youngest Director at RISE and passionate about solving global challenges that include re-imagining a new Africa, Climate Change and Social Equity.

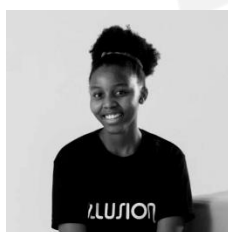
Lwandle is also an entrepreneur at heart, a self-taught graphic designer and has an independent brand, ILLUSION, specializing in digital design, clothing and merchandise

Advisory Board

The Advisory Board, consists of members in a non-Executive capacity. They provide non-binding advice on the strategic management and operations of RISE in accordance with their respective fields of expertise on a voluntary basis.



CELIWE DLAMINI
Adv. Board Chairperson
RISE Chief Executive Founder



LWANDLE DLAMINI
Adv. Board Vice-Chairperson
Founder at Illusion Art



GABBY DLAMINI
Adv. Board Secretary
Associate Lecturer at Nelson Mandela University



SIPHO DLAMINI
Adv. Board Member
FODSWA President



BARBARA FRANKEN
Adv. Board Member
Specialist in Monitoring & Evaluation and Health Information Systems



ANELE MBUYA
Adv. Board Member
Old Mutual Rest of Africa (ROA) Business Partner



Yael TIDHAR
Adv. Board Member
Program Director at Likusasa Letfu



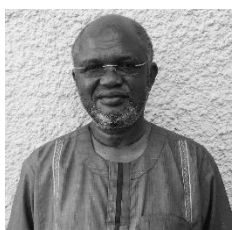
PENNY BOUWER
Adv. Board Member
Executive Director at PennyB: Social Media Architect



OLIVER SENNE
Adv. Board Member
Marketing & Legal Professional



JANET ONGOLE
Adv. Board Member
M & E Director at URC Eswatini



KOBLA QUASHIE
Adv. Board Member
Chairman at KQ Group and Ghana Consular

Our Services

RISE offers the following specialized services:

1. **STRATEGY DEVELOPMENT** – Customized corporate CSI strategies aligned with the brand ethos.
2. **CONSULTANCY** – Advisory services, database registration, access and management of projects and aligning these with corporates for funding.
3. **JOB PLACEMENT** – Providing job placement services mainly for Persons with Disabilities.
4. **PROPOSAL WRITING** – Specialist donor proposal writing ensuring that the beneficiary request is given optimal funding consideration.
5. **FUND MANAGEMENT** – Securing and managing the distribution of funds as per the allocated and agreed terms of the initiative requiring funding.
6. **REPORTING** – Professionally crafted reports detailing project update and impact donor funding has made.
7. **ADMINISTRATION** – Secretariat services provided by a dedicated team to assist beneficiaries with administrative services.
8. **DIGITAL** – Database Management, Monitoring & Evaluation, Surveys.

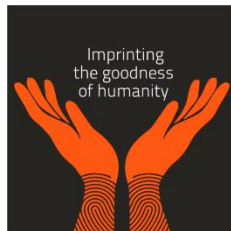
RISE's services are primarily delivered via the following Program Pillars

1. **LIFE SKILLS** – We provide a robust, life-skills and job placement preparation program particularly for Persons with Disabilities who can be employed and integrated into business operations.
2. **SIGN LANGUAGE** – The Eswatini National Disability Plan of Action (2018) has sign language as a key deliverable program the country must attain by 2022. RISE offers Sign Language courses to companies and organizations that uphold diversity, making them leaders in their business operations by ensuring especially front-line staff are trained in sign language. By so doing companies create distinction and improved customer response.
3. **FINANCIAL EDUCATION** – Partnerships with financial institutions that embody financial literacy, affords us the opportunity to ensure that we are able to provide financial education workshops to entrepreneurs. We utilize the content developed by these institutions to a broader audience, equipping them with knowledge to make sound productive financial decisions and better manage their money.
4. **YOUTH BOARDS** – Focus on the youth has taken centerstage and RISE is seeking corporate partnerships that assimilate youth in serving in cross-functional business operations committees.
5. **SPORT** – Low capital infrastructure investment sports are our focus. Partnership with the Eswatini National Chess Federation to ensure that chess is played in all schools at pre-school to tertiary level, including at business level is our goal.

Projects Database

RISE is engaged with a wide range of projects that require various forms of support. Below are a few projects that can perfectly link into your organizations CSI prospects or portfolio.

For more info on these projects or to kickstart your organizations very own project with RISE visit www.rise.org.sz or contact RISE via email on celiwe@rise.rg.sz



Work With Rise

Does your organization wish to leave its lasting Imprint with its audience or community?

Donors can pledge to fund projects aligned with their social investment strategy. Donations are utilized to provide ongoing delivery of the programs to identified beneficiaries in rural to urban communities.

To fund a project and make other valuable contributions, or start your organizations own project contact RISE.

Our Clients & Partners



Picture Gallery



1. RISE Chief Executive Founder, Celiwe Dlamini delivering a keynote address at a beneficiary event
2. RISE Chief Executive Founder With UN Resident Coordinator Her Excellency Nathalie Ndongo-Seh, FODSWA President Siphso Dlamini & Thembsile Mbingo.
3. Babe Vilakati is often found at Mbabane Mall. Please support him with a donation.
4. RISE Chief Executive Founder with Mfundo Dlamini who works at Pick'n'Pay & Difference Mazyia from the Matsetsa High School for the Deaf. Mfundo & Difference are both deaf yet employed & communicate via sign language.
5. RISE Chief Executive Founder with Make Vilakati a hardworking elderly who sells crocheted items at the Mbabane Mall - Please Support Her Work.
6. Christ Worshippers Gospel Group is a group of talented, visually impaired artists who also perform for corporate & private functions. Please support them.



RISE

The Imprint of Humanity

📍 Elangeni House | Thembelihle | Mbabane | Kingdom of Eswatini

✉️ P.O. Box 551, Mbabane, H100, Eswatini

☎️ +268 2411 2441

📞 +268 7677 3777 or +268 7977 3777

✉️ celiwe@rise.org.sz

🌐 www.rise.org.sz